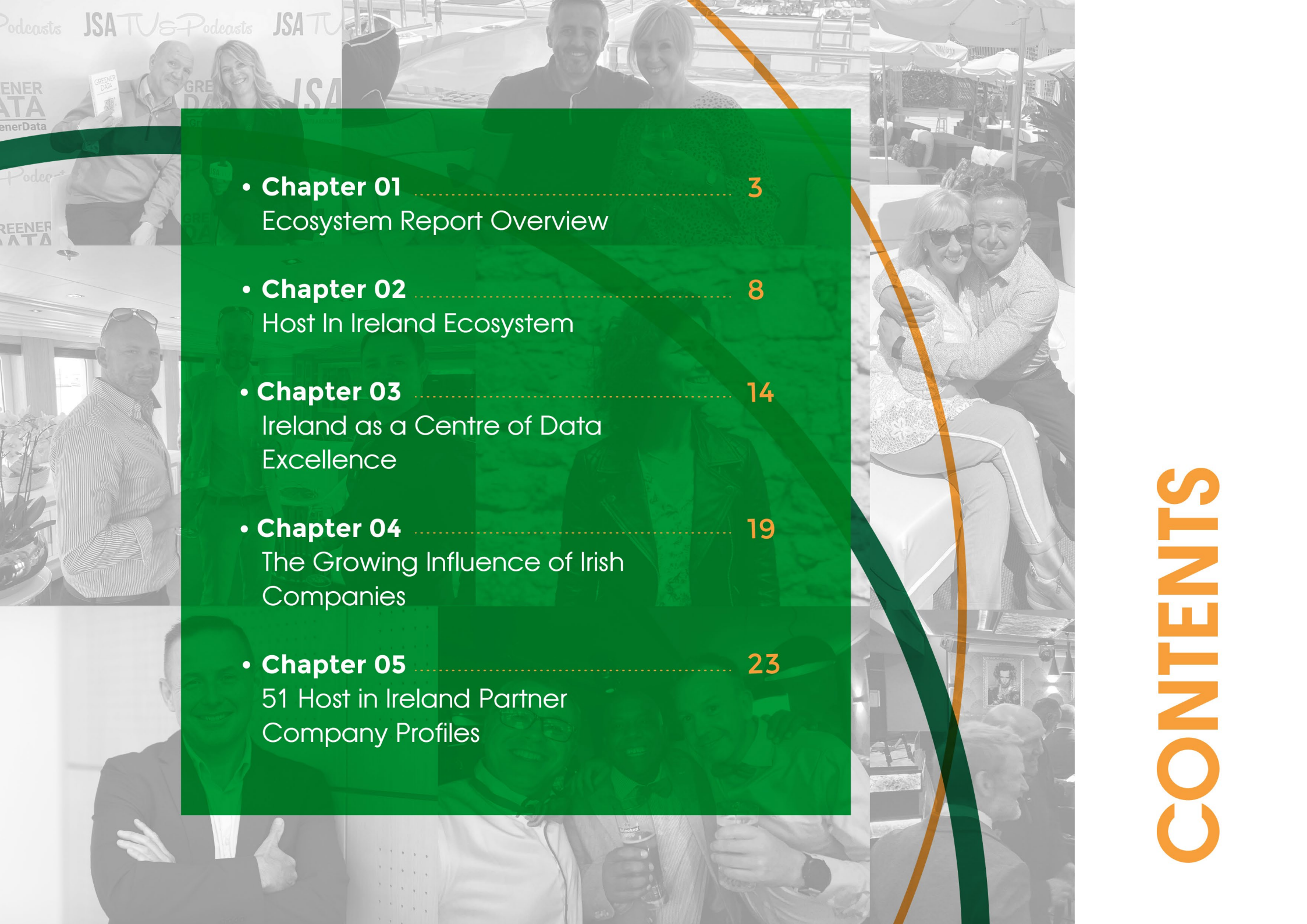




Host In Ireland

ECOSYSTEM REPORT 2022

The I.R.I.S.H. Data Centre Ecosystem Explained

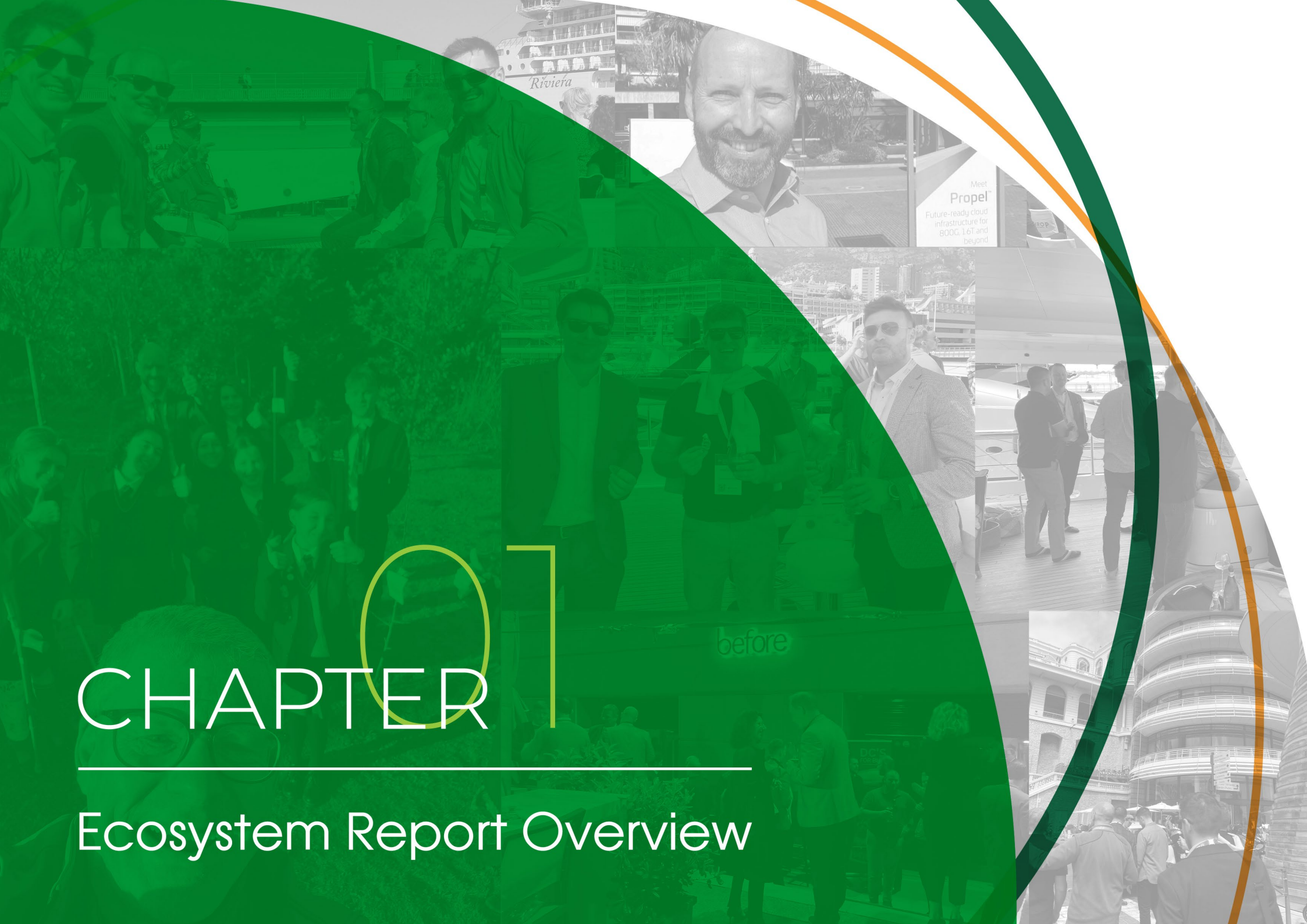


- **Chapter 01** 3
Ecosystem Report Overview
- **Chapter 02** 8
Host In Ireland Ecosystem
- **Chapter 03** 14
Ireland as a Centre of Data
Excellence
- **Chapter 04** 19
The Growing Influence of Irish
Companies
- **Chapter 05** 23
51 Host in Ireland Partner
Company Profiles

CONTENTS

CHAPTER 01

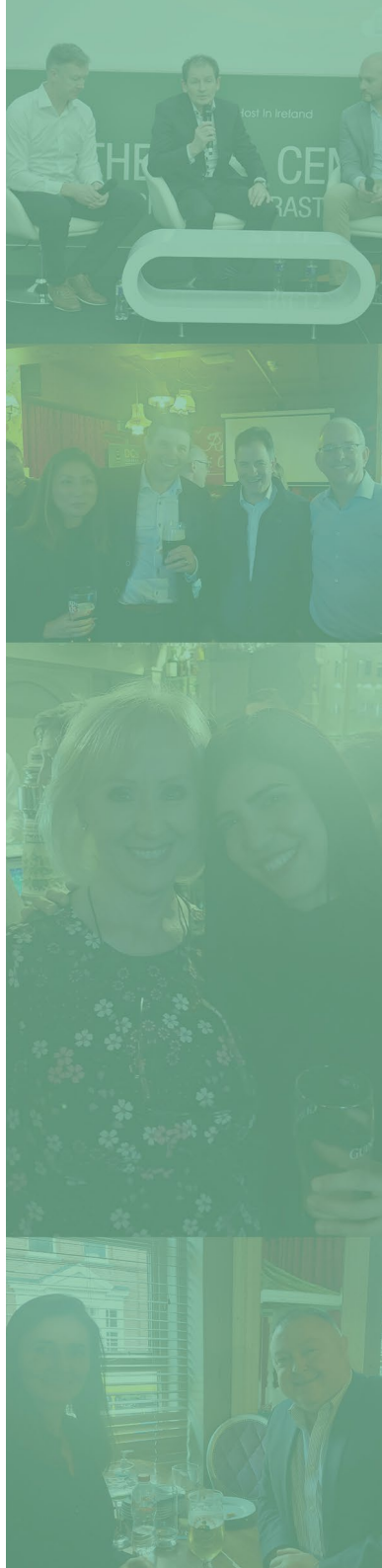
Ecosystem Report Overview





Garry Connolly
Founder
Host In Ireland

“ The knowledge acquired by Irish companies has helped Ireland evolve as a leading data hosting nation, as well as a supplier of skills and services needed for data’s global expansion. ”



A rapid digital transformation has taken place both here in Ireland and across the planet in an era widely referred to as the Industrial Revolution 4.0. Data and digital tools are enabling new types of innovation, communication and creativity. Where would we be without data over the last few years? Zoom calls to friends and family, virtual classrooms for remote learning and online shopping to clothe and feed us have all been critical components of our shared global experience.

Ireland has had a six decade relationship with data. From mainframes in the 1960s to *world-leading* software exports via floppy disk in the 1990s to data exports via data centres and fibre today. Irish companies have a long history supporting and partnering with global multinational organisations. Nine of the top ten global ICT companies have a *home in Ireland* as do more than 1,000 data-driven digital infrastructure organisations, which have grown up alongside the global tech giants. Through this experience, the knowledge acquired by Irish companies has helped Ireland evolve as a leading data hosting nation, as well as a supplier of skills and services needed for data’s global expansion.

Despite this success, there is still much that is misunderstood about the part of the digital infrastructure where data lives – in the data centre. The buildings are sometimes thought of as secretive and austere grey “boxes” that are disconnected from their local communities. There is a misperception they add little value to the communities they reside in despite the economic benefits they provide.

ECOSYSTEM REPORT OVERVIEW



“ A data centre is so much more than a building on the side of the road. It is the heart of a digital infrastructure ecosystem that touches dozens of different industries. ”

A data centre is so much more than a building on the side of the road. It is the heart of a digital infrastructure ecosystem that touches dozens of different industries. Everything from construction, real estate, engineering, architecture, telecommunications, energy, software, IT hardware, security, legal, marketing, finance and more. It's not just about what happens within the data centre, but also the critical role data centres play supporting their customers who come from every industry, including medical, research, automotive, manufacturing, financial services, travel and many more.

An ecosystem at its most basic biological definition consists of organisms and the physical environment with which they interact. A business ecosystem is typically *defined* as a network of organisations involved in the creation and delivery of products and services. For an ecosystem to flourish, cooperation and competition - or “co-opetition” - needs to exist. A diverse group of partners all interact and collaborate to bring the most innovative ideas and products to the forefront and raise the playing field for the industry as a whole.

This ethos has been at the heart of Host in Ireland since our inception. Although many of our partners are competitors, they have historically come together as a collective to promote the capabilities of Ireland as a centre of data excellence. Today, many of our partners are location agnostic and building robust businesses from Ireland across Europe, the US, the Middle East, and making inroads to Africa and the rest of the world. The focus is now just as heavily focused on promoting Irish companies in the global data centre market.

What has made Ireland an intrinsic home to digital infrastructure and Irish companies so successful? Simply put, it's who we are, **I.R.I.S.H.** There are common threads that run throughout companies who work from and within Ireland no matter how big or small they are – **I**ngenuity, **R**elentlessness, **I**ntegrity, **S**trength and **H**istory. But what exactly does that mean?



I

Ingenuity

There is a flexibility and agility with **I.R.I.S.H.** companies that drives creative solutions and problem solving when it comes to designing, building and operating data centres. We don't remain steadfast in doing something just because it's always been done that way. We look for new ways to innovate the process and ensure we leave the project better off than how we found it.



R

Relentlessness

I.R.I.S.H. companies take a relentless approach to problem solving for customers. First and foremost, there is a passion to fix the problem and deliver to the client's expectations. There is a unique ability to refocus problems and get projects back on track.



I

Integrity

The care and attention to detail on global data centre projects is world class. It embodies a strong work ethic combined with a personal responsibility to get the job done right. Simply put, the clients trust their Irish business partners.



S

Strength

The strength of the relationship **I.R.I.S.H.** companies have throughout the ecosystem is like no other. It is both the quantity and quality of relationships that enable **I.R.I.S.H.** companies to collaborate at every level of a project. It's an inherent part of Irish culture that translates successfully to the business environment.



H

History

None of this has come about by accident. Ireland's long history of foreign direct investment with technology, pharmaceutical, life sciences companies and more set the stage for Irish companies to capitalise on the data centre opportunity once it arose. This has resulted in an impressive track record of success and experience that now benefits the global data economy.

Being **I.R.I.S.H.** is not about nationalities, but rather how and why digital infrastructure coming from Ireland – with global and Irish companies – plays a unique role around the world. The data centre market opportunity in Europe is expected to grow to \$66B by 2030, and the domestic Irish market represents 10% of that opportunity.

Whilst the 6 Ps - Policy, Pedigree, People, Power, Pipes and Proximity - have been a valid representation of the domestic market, this report will begin to explore a deeper understanding of “why **I.R.I.S.H.**”. We will look at how Ireland has become a centre of Data Excellence. We’ll also examine the growing influence of Irish companies in the global market. Finally, we’ll showcase the Host in Ireland partner ecosystem and introduce you to the companies truly making Ireland an emerald jewel in the crown of global digital infrastructure.



Garry Connolly
Founder



Host In Ireland

“ A diverse group of partners all interact and collaborate to bring the most innovative ideas and products to the forefront and raise the playing field for the industry as a whole. ”

DATA CLOUD
GLOBAL CONGRESS
2022



Panel: Paving the way for 4IR



Host:
John Booth
Managing Director
CARBON 3IT LTD



Phill Lawson
Chief Innovation
Officer
ALIGNED



Sujit Panda
Chief Technology & Information
Officer
BDX DATA CENTERS



Jocelyn Paulley
Partner
GOWLING WLG

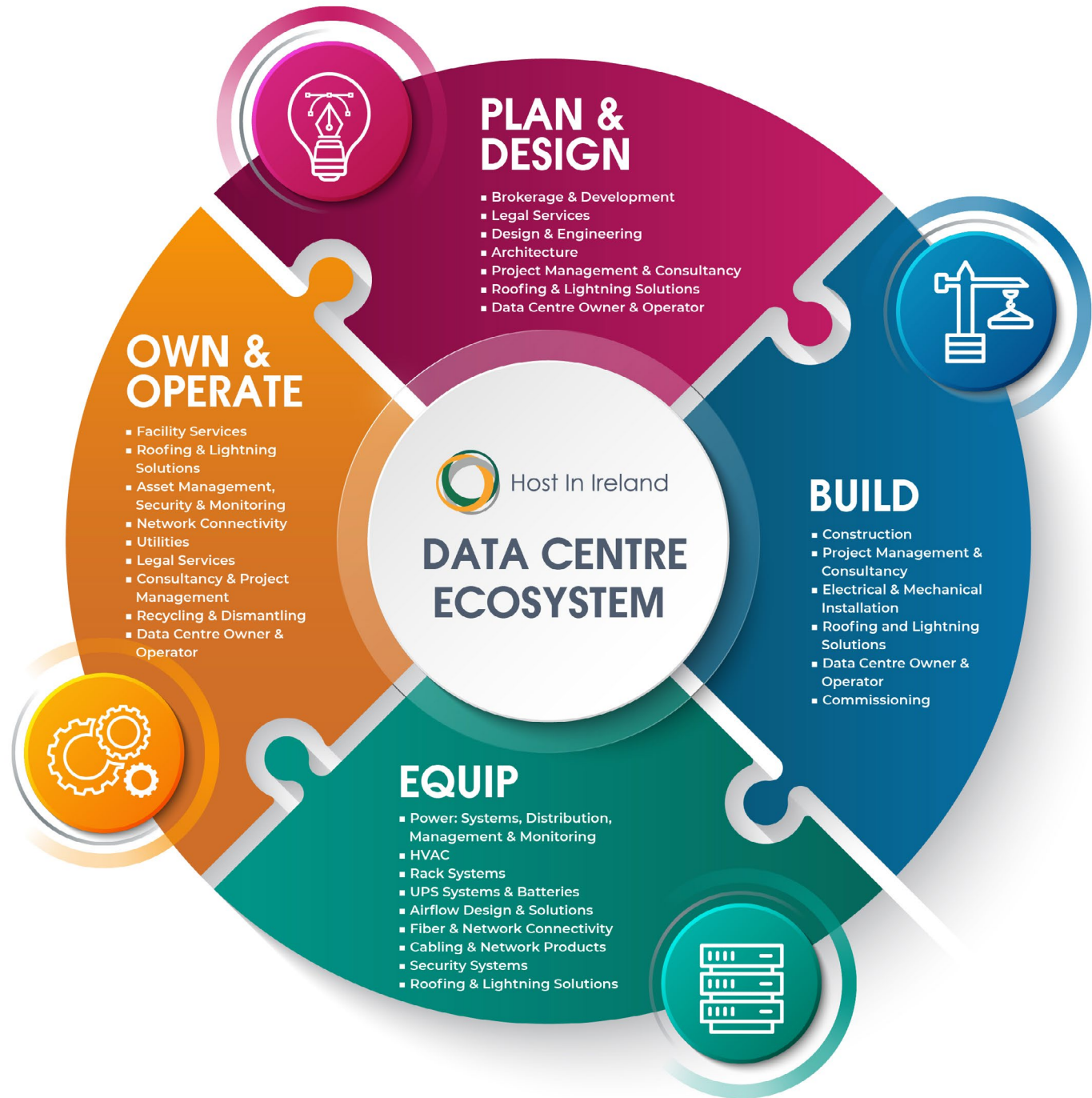


Garry Connolly
Founder
HOST IN IRELAND

CHAPTER 2

Host In Ireland Ecosystem

A rich and diverse set of companies is reflected in the breadth and depth of Host in Ireland's partners. Our partners are responsible for selecting, planning and design during the pre-construction phase of a data centre build. They are also actively involved in the build phase of construction of the base building and commissioning of a data centre. The largest cohort of Host in Ireland partners equip data centres with the IT equipment, infrastructure, HVAC and other operational systems as they move from the construction to the operational phase of the data centre. Finally, our partners own and operate data centres and are responsible for the daily functioning of services to and for a data centre, as well as refreshing projects and building out new ones.





PLANNING AND DESIGN

Companies in this cohort are responsible for the processes taking place before construction of the physical data centre building begins. These functions include site selection, legal and financial support, workforce support, facility planning, data centre design and engineering, plus various consulting and professional services.

BROKERAGE &
DEVELOPMENT

LEGAL SERVICES

DESIGN & ENGINEERING

ARCHITECTURE

PROJECT MANAGEMENT
& CONSULTANCY

ROOFING &
LIGHTNING SOLUTIONS

DATA CENTRE OWNER
& OPERATOR

CBRE

EVERSHEDS
SUTHERLAND

AECOM

exyte

Jacobs

SHARPGROUP ↻

Schneider
Electric

C+W O'BRIEN
ARCHITECTS

MCA
ARCHITECTS

RKD

Callaghan | **RED**

ETHOS
Engineering Wow

GagaMuller
Group

MITCHELL
MCDERMOTT

REBELLEON

LPI
GROUP TO ENSURE PROTECTION

MOY

CyrusOne

EQUINIX

interxion
A DIGITAL REALTY COMPANY

Keppel Data Centres

| **PURE DC** |

T5DataCenters
Forever On.

yendir



BUILD

This cohort involves the actual construction of the base building and the commissioning phase of the data centre. This includes construction, roofing, lighting, power, etc.

CONSTRUCTION

PROJECT
MANAGEMENT &
CONSULTANCY

ELECTRICAL & MECHANICAL
INSTALLATION

ROOFING AND
LIGHTNING SOLUTIONS

DATA CENTRE OWNER
& OPERATOR

COMMISSIONING





EQUIP

The largest of the four cohorts, companies involved here have the widest responsibility as the data centre moves from being under construction to operational. This includes core components of standard IT equipment and software (e.g. servers, networking devices), infrastructure such as racks, HVAC and electrical systems, and other computing infrastructure resources. Support infrastructure systems are also included and represent the physical security of the space, HVAC cooling, Uninterruptible Power Sources (UPS), as well as utility services infrastructure.

POWER SYSTEMS,
POWER
DISTRIBUTION,
MANAGEMENT,
METERING &
MONITORING

HVAC

RACK SYSTEMS

UPS SYSTEMS
& BATTERIES

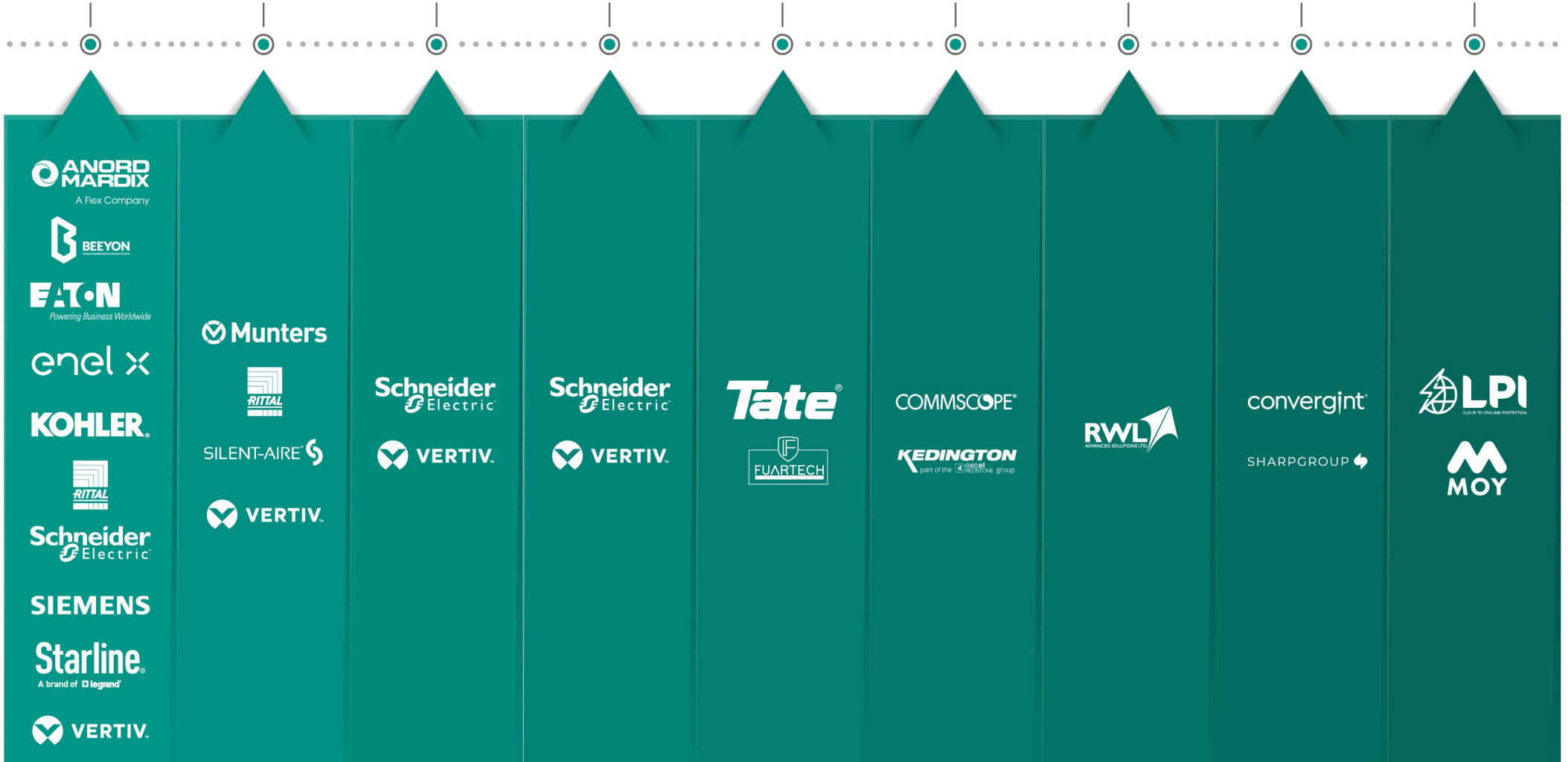
AIRFLOW DESIGN
& SOLUTIONS

FIBRE & NETWORK
CONNECTIVITY

CABLING &
NETWORK
PRODUCTS

SECURITY SYSTEMS

ROOFING &
LIGHTNING
SOLUTIONS





OWN AND OPERATE

These organisations are responsible for the daily running of the data centre. These are services such as utilities, security, facility services, cleaning, consultancy, legal, marketing, HR, and recycling & dismantling.

FACILITY SERVICES

ROOFING & LIGHTNING SOLUTIONS

ASSET MANAGEMENT, SECURITY & MONITORING

NETWORK CONNECTIVITY

UTILITIES

LEGAL SERVICES

CONSULTANCY & PROJECT MANAGEMENT

RECYCLING & DISMANTLING

DATA CENTRE OWNER & OPERATOR

CBRE

SHARPGROUP



Schneider Electric

convergint



enel x

EVERSHEDS SUTHERLAND



REBELLEON



CyrusOne



interxion
A DIGITAL REALTY COMPANY

Keppel Data Centres

| PURE DC |

T5DataCenters
Forever On.

yendr



CHAPTER 3

Ireland as a Centre of Data Excellence

“ A centre of excellence is collection of individuals or organisations coming together to share best practices, research, knowledge and support in order to innovate. ”



If you Google a [*definition*](#) for “centre of excellence” the first one you come across is “a place where the highest standards are maintained.” In broader terms, a centre of excellence is typically thought of as a collection of individuals or organisations coming together to share best practices, research, knowledge and support in order to innovate on a particular subject matter. Ireland has become a successful “data” centre of excellence because of both multinational and Irish companies that call Ireland home.

Enterprise Ireland refers to Ireland as “a global innovation partner to the world’s most dynamic companies, delivering transformative technology that shapes their futures.” The success we see today is a continuation of the 60 years of being a base for Foreign Direct Investment (FDI) and the knowledge and experience accumulated by Irish companies who have done business with these organisations over the years.

To better understand how this has impacted the Irish data centre industry both at home and abroad, Host in Ireland sat down with a few of our partners to hear more about their journey. We spoke with Paddy Ryan, CEO of GagaMuller; Paudi Reidy, CEO of LPI Group; Cathal Quinn, Commercial Group Director of Moy Materials; and Greg Hayden, CEO of Ethos Engineering. Each of these companies are at a different stage of growth and development, but each have started their business from Ireland and have scaled up to grow their business exporting Irish services and products to the global data centre market.

IRELAND AS A CENTRE OF DATA EXCELLENCE

How is Ireland viewed as a centre of excellence? Do you think it has changed over time?

Paddy Ryan: In terms of the construction industry, in general, Ireland has been viewed as a centre of excellence for many years. You can be in Finland, Netherlands or Denmark and you see Mercury, Adrmac, Jones, etc. logos on every data centre site across Europe.

Paudi Reidy: In addition, multinational and FDI companies have long been in Ireland. One of the components that has enabled them to be successful is through Irish common law. They have been safeguarded through the years, whether it is through semiconductors, life sciences, pharmaceutical or other industries. That trust and security developed translates to data and the data centre industry.

Cathal Quinn: [This trust and security] is important as the pace of data moves faster than any other industry in Ireland. In addition to the reputation set by the construction industry and the ease of doing business in Ireland, the relationships these companies build with their Irish counterparts are critical to the success of any project, but in particular for the data centre industry.

Is this something unique to Ireland?

Cathal Quinn: I believe it is. We've been on multiple sites across Europe, where the main contractor changed four, five or six times. We've seen the architectural firms change a couple of times. All for the same client, but we've managed to stay. I believe that the quality and strength of the relationship makes a difference.

Sometimes in Ireland we just think that's just the way business is done, but when we go abroad, it's not the same. Other cultures may deliver projects based on metrics or procedures, but the way we build relationships is unique to Ireland. It enables us to get the job done right for the customer, and I think, is reflected in the longevity we see on projects.

Greg Hayden: Building that trust begins on Day One. When we are pitching a project, the team we present in that initial meeting is the team they work with throughout the project.

As we made the transition to the data centre sector in 2008, we were learning on the job with the clients. When the time came to pitch and win business abroad, the dynamic changed. We were now bringing in knowledge of having worked with these top foreign direct investment companies. They knew what we were about, we understood the industry and together we were able to be successful in other markets.



Cathal Quinn
Group Commercial
Director
Moy

“ I believe that the quality and strength of the relationship makes a difference. ”



Greg Hayden
CEO
Ethos Engineering

“ Building trust begins on Day One. When we are pitching a project, the team we present in that initial meeting is the team they work with throughout the project. ”

When do these relationships have the most impact?

Greg Hayden: In any large scale project like building a data centre, problems can happen. What is unique to the Irish companies- both within Ireland and abroad- is that we know how to get ourselves and our fellow team members out of those problems and get the project back on track. It's about how you approach the job and interact with the client. The customer knows we are there and will stand up and be counted. We aren't just there for the fair weather days, but we're there for when things go wrong.

Paddy Ryan: GagaMueller is only four years old. In the early days, we took whatever job we could get. Luckily we had data centre experience and relationships with key industry figures that gave us opportunities to show what we were able to do. I found we ended up being parachuted in when problems occurred. We wouldn't get a job on tender because we didn't have enough experience. Then, we'd get a phone call when the schedule is 14 weeks in delay and they need someone to fix it.

Cathal Quinn: In this industry, we get brought off course every hour, every minute of every day, but we're phenomenal getting it back on track. We're doing it now with an educated skill set that comes from university level through real-world experience. Yes, there is a strong work ethic, but it's combined with phenomenal experience.

What does growth look like for your organisation now?

Paudi Reidy: Given the product nature of our business, we originally came into a project on spec via designers, engineers, contracts, etc. What we are seeing now is growth in our maintenance business where we are offered contracts for maintenance hours as well. To put that into perspective, we had 10 employees in 2016 and have grown to 160, and we anticipate hiring another 25 in the next few months. So we are not only growing by exporting into Europe, but we are also diversifying our business as well.



Paudi Reidy
CEO
LPI Group

“ What we are seeing now is growth in our maintenance business where we are offered contracts for maintenance hours as well. ”

Paddy Ryan: For us, growth means expanding into the European market. For a young company, the ability to rely on my Irish counterparts on how to do that and best practices for success has been invaluable. Paudi has been a tremendous help in that regard. What is the most tax efficient way of setting this up? What is the best structure for the business? How to come into a market, set up the business and hire local talent.

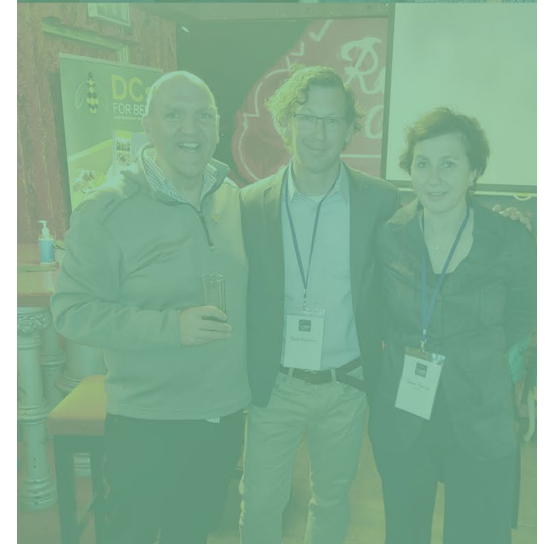
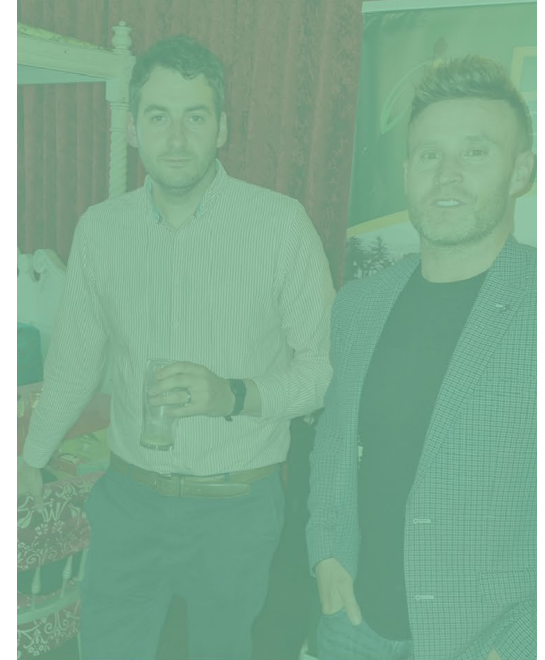
Greg Hayden: One thing that makes us all unique is that we are all specialists in what we do. We are not trying to be all things to all people. We are good at our piece of the puzzle and that opens up opportunities across Europe. At Ethos Engineering, we are part of a European Alliance Network with 14 other firms across Europe. When we come into a job with one of those partners, all of a sudden we go from 120 people to 3500. It opens up a pathway for us to do business with a greater number of clients in a broader set of countries.

Cathal Quinn: And that brings us back to our earlier point about relationships. When we go into a new country, sometimes we work with local partners. On other occasions we bring in Dutch or German or British or Irish partners to help on the project. Each market is different so we need to understand how each relationship is different as well. What works in one country might not work in another. We have to take the individuality of the local market into account as well as understanding how it plays into the data centre industry as a whole.

“ For us, growth means expanding into the European market. ”



Paddy Ryan
CEO
GagaMuller Group





CHAPTER 4

The Growing Influence of Irish Companies



Dave Phelan
Business
Development Director
Suir Engineering

“ All the skills and quality and safety ethos that we developed in pharmaceuticals could be brought into the data centre world. Our clients are similar across the sectors. ”

Foreign direct investment (FDI) has long played a role in Ireland’s economic growth and development. The track record of successful partnerships between Irish companies and multinational organisations spans multiple industries over numerous decades. Many indigenous Irish companies have been able to capitalise on the knowledge, experience and skill sets gained from the technology, life science, and pharmaceutical industries to expand both globally and within Ireland. The data centre industry, in particular, embodies how Irish companies have become influencers in the global market.

For construction service companies - builders, contractors, engineering, professional services, infrastructure suppliers - the 2008 economic downturn created a necessity to diversify their business. As they were evaluating how their breadth of knowledge supporting pharmaceutical or semiconductor companies created a unique selling proposition, the burgeoning data industry was seeing the arrival of multinational hyperscale operators in Ireland. Dave Phelan, business development director for Suir Engineering, explains one of the ways his company was able to make that transition: “All the skills and quality and safety ethos that we developed in pharmaceuticals could be brought into the data centre world. It’s the same with work we continue to do in utilities and energy that also feeds back into data centres as well. Our clients are similar across the sectors.”

THE GROWING INFLUENCE OF IRISH COMPANIES

[Aidan Kerins](#), group business development director for Kirby Group, identifies some of the specific skills that have made them successful in the European data centre industry: “I believe that over time, Irish companies became particularly skilled at reporting to the standards that the US and other FDI multinationals expected in terms of quality assurance, schedule reporting, cost management, and so on. We have a long history of delivering to the asset delivery requirements that suits these organisations and continually exceeding their expectations.”

As a result, the data centre ecosystem thrived within Ireland. “Everything channels back to Ireland because of the level of expertise built up from the last five to ten years,” said [Shane McMahon](#), European sales director for Tate Inc. “Many of us in the industry got in early with the hyperscale clients and went through those early growing pains and learned so much. Now, the accumulated knowledge and experience can be found both here in Ireland and with Irish companies.”

Irish companies are looking beyond Ireland and exporting those services and expertise abroad. Some of this opportunity comes from servicing untapped markets. “Early on, nobody was building at scale in the traditional data centre hubs. Data centres in Frankfurt, London, Amsterdam and Paris (FLAP) were in the middle of massive cities. It didn’t make any sense for some of the big contractors to go in, which created an opportunity for us,” said [Philip Cruise](#), preconstruction data centre lead for SISK. “Because we were working with clients who were moving outside of traditional spaces to operate at scale, we were able to build upon that experience and expand our work with colocation clients who were looking to do the same.”

“ Everything channels back to Ireland because of the level of expertise built up from the last five to ten years. ”



Shane McMahon
European Sales Director
Tate Inc



Aidan Kerins
Group Business
Development Director
Kirby Group

“ I believe that over time, Irish companies became particularly skilled at reporting to the standards that the US and other FDI multinationals expected. ”



Philip Cruise
Preconstruction
Data Centre Lea
SISK

“ Early on, nobody was building at scale in the traditional data centre hubs. ”

Building on past success is laying the foundation for future progress. “For many of us, the most successful strategy is to follow key clients into new markets as they expand. We have built the relationships for them to know they can trust us on each project they bring us into,” said [Stephen Byrne](#), group business development manager for Mercury. “So while we will continue to see development in FLAP, we will also be seeing growth in secondary markets such as Italy, Spain, Portugal, Poland and other Eastern European countries.”

This success and continued growth is not without significant challenges. Supply chains are fraught with difficulty, talent is scarce and sustainability and carbon reduction at all stages is under increasing scrutiny. These pressures and challenges, much like the 2008 economic downturn, creates an opportunity for Irish companies to lead. However, this time they do so with experience and earned trust of customers, partners and colleagues across the industry. It’s a good time to be **I.R.I.S.H.**



“ For many of us, the most successful strategy is to follow key clients into new markets as they expand. ”



Stephen Byrne
Group Business
Development
Manager
Mercury

CHAPTER 5

Host in Ireland Partner Company Profiles



45

CBRE

43

Starline

58

exyte

69

schneider

68

mercury

32

46

DC'S FOR BEES

Join at
slide.com
#Datafound



DC'S FOR BEES
AN INITIATIVE OF HOST IN IRELAND

Host In Ireland



In this chapter you will get to know our **51 partner companies** who are the key data centre related service and technology providers within Ireland. Some of our partners are multinationals with operations in the Irish market. Some of them have chosen Ireland as their European base. And as you have seen in previous chapters, a number of our native Irish partners are now successfully running digital infrastructure around the world.

Regardless of their origin or size, all of our partners form an important part of the Host In Ireland Data Centre Ecosystem and the wider digital infrastructure landscape. Individually, within their fields of expertise, and together- in the spirit of “co-opetition”- they innovate the ways our digital infrastructure is being designed, built and operated.



Plan & Design



Build



Equip



Own & Operate

HOST IN IRELAND PARTNER COMPANY PROFILES



AECOM

Sara Devitt

Director

 www.aecom.com

DESIGN & ENGINEERING



- MEP Engineering
- Civil & Structural Engineering
- Architecture
- Project Management
- Cost Consultancy
- Environmental Due Diligence
- Permitting
- Specialist Services Such as CFD Modelling, Fire Engineering, Security And Ict Design

Through collaboration, cutting-edge research and our integrated approach to design and delivery, AECOM is helping clients meet growing global demand for the next generation of data centres.

As one of the world's leading infrastructure firms, AECOM has the strength and stability to bring facilities to market with minimal risk through our global network of data centre specialists and invaluable local knowledge held by regional teams. We understand the complexities of designing and constructing critical infrastructure as well as the industry drivers and the organisational challenges faced by hyperscale, developer, colocation and telecommunication clients and end-users.

“ Anord Mardix is known for engineering excellence around the world and we have a lot of exciting projects on the horizon. ”



A Flex Company

Alan McCartney

VP of Sales, Key Accounts



www.anordmardix.com

POWER SYSTEMS & POWER MANAGEMENT



- BIM Modelling
- Bespoke Modular Design
- Site Services and Maintenance
- Hyperscale Fabrication
- Global Project Installation
- Switchgear, Busway and Power Management Manufacturing
- 3rd Party System Maintenance and Upgrades

Anord Mardix, a Flex company, is the global leader in critical power distribution and protection. Our operational and manufacturing facilities reach globally across North America, Europe and Asia Pacific employing over 1,000 highly skilled people in a comprehensive and diverse range of roles.

We lead through engineering excellence, driving quality, sustainability and innovation through our comprehensive product range and service offering. We work with our clients to build relationships focused on bespoke end-to-end solutions, unrivalled in the critical power industry.

“ We believe in setting new standards for the industry and driving innovation, we tailor solutions to our clients’ evolving needs, and we work hard to harness our unrivalled knowledge to deliver safety first and excellence as standard across award winning projects.”



Roy Millar

MD of Data Centres

 www.ardmac.com

CONSTRUCTION



- Architectural fit-out of Data Centres
- Hot & cold aisle containment
- Modular Data Centres
- Seismic and structural ceilings
- Doors and security packages
- Fit out of ancillary areas
- BIM & 3D visualisation
- DFMA

Ardmac is an international construction company delivering complex high value workspaces and technical environments. We have been providing high quality spaces to fast moving and evolving markets for more than 45 years. We are a leading global provider of data centres and modular solutions.

At Ardmac, our reputation is built on delivering results and exceeding client expectations. As a specialist contractor, we provide the architectural fit-out of Datacentres, offering a range of solutions, including Hot & Cold Aisle Containment (HAC's).

We seek to drive efficiencies utilising lean principles, early contractor involvement, maximising BIM & 3D visualisation, smart digital processes and by taking a DFMA approach where possible.



Damian Dalton

CEO

 www.beeyon.com

POWER MANAGEMENT



- Data centre energy management and performance solutions software
- Complete energy and performance visibility at the server, rack, virtual and business object-level

Beeyon is an international award-winning Irish startup developing innovative data centre energy management and performance solutions.

Beeyon's patented Papillon technology is a software solution that gives complete energy and performance visibility at the server, rack, virtual and business object-level.

Building on its technology and expertise, Beeyon is now collaborating with Europe's leading data research institutes including RISE SICS North at Lulea, Sweden and Ireland's national data analytics research centre CeADAR to produce the next generation of AI, neural network data centre management tools. Beeyon is based in Dublin with research and development sites in Stockholm and Graz.

“ We are delivering the next generation of data centres for our international clients locally.”



C+W O'BRIEN
ARCHITECTS 

Arthur O'Brien

Managing Director

 www.cwoarchitects.ie

ARCHITECTURE



- Architecture
- Interior Design
- Site Appraisal & Masterplanning
- Conservation
- Assigned Certifier
- PSDP
- BIM & Digital Construction
- MMC & Sustainability

Our practice is built on delivering design-driven architectural solutions with a commercial edge that ensures we provide value by design. The combination of our highly professional service with a straightforward methodology engages clients throughout the design process, delivering smart, sleek and sustainable projects.

A diverse, multi-disciplinary team provides vision and value by design, combined with technical and commercial skills.

“ The ambition of CAI is to support and enable the data centre industry to achieve operational readiness and operational excellence.”



Niall Killeen

Global Director

 www.dcxagents.com

COMMISSIONING



- Construction & Commissioning Management
- QA/QC Services
- Mission Critical Facility Commissioning
- Existing & New Facility Commissioning
- Functional Performance & Integrated Systems Testing
- Commissioning Authority
- Energy Marshalling
- General Contractor Commissioning Support
- Low, Medium, And High Voltage Test Witnessing

Since CAI was founded in 1996, we have delivered nearly a billion dollars in services for hundreds of clients across thousands of projects globally.

With offices in the US, Canada, Ireland, United Kingdom, Italy, Switzerland, Netherlands, India, China, South Korea, Singapore, Malaysia, and Australia, we have built an international team of over 800 professionals providing local support from a global company.

We have delivered services in support of over 2000MW of IT load across multiple sites through EMEA, APAC and the Americas. Our engineering, technical, and consulting services are fashioned to deliver mission critical facilities with a high level of performance and reliability. When operational readiness and day-one performance are critical, CAI delivers to a higher standard.

“ With ENGIE Impact behind us, we’re a truly global business. I’m excited about the investment and planned growth in our local teams. ”



Callaghan | RED
A COMPANY OF ENGIE

Killian O'Neill

Regional Director

 www.red-eng.com

CONSULTANCY & PROJECT MANAGEMENT, ELECTRICAL & MECHANICAL INSTALLATION

- MEP Services
- Lead Design Consultancy
- Building Physics- CFD Analysis
- ICT Infrastructure Design
- Commissioning Management
- Sustainability Solutions

Callaghan | RED is recognised as the foremost data centre designer in EMEA. With dedicated MEP design engineers providing best-in-class services, we have delivered over 1000 data centre projects in over 70 countries.

With over 30 years of experience in Ireland alone; Callaghan | RED provides technical expertise to deliver multi-disciplinary lead consultancy and dedicated MEP design solutions. Our building physics, sustainability and R&D teams are industry leading.

As part of the ENGIE Impact group, the mission is to help global clients accelerate their sustainable transformation toward a zero carbon future, making sustainability happen today.

We design the buildings that connect the world.



“ CBRE unlocks maximum value and performance for your data center portfolio, reducing risk through operational strategies powered by technology and talent. ”



CBRE

Alana Wilksch

Global Strategic
Development Manager

 www.cbre.ie

BROKERAGE & DEVELOPMENT FACILITY SERVICES



- Consulting
- Advisory And Transaction
- Project Services
- Critical Facility Operations
- Technology Operations
- Supply Chain Management
- Energy Optimization & Management

CBRE is the leading provider of lifecycle data center services, managing mission critical space across 700+ sites globally and delivering integrated solutions for data center owners, occupiers, and investors. CBRE's in-house team of 5,000+ data center experts deploy strategies and processes to meet data center reliability needs today, while staying ahead of tomorrow.

“ We manufacture High-Quality Critical Infrastructure needed to enable digital acceleration, providing confidence and reassurance to our clients that their network performance is safe and secure.”



COMMSCOPE®

Adrian Hayes

Sales Director, UKI

 www.commscope.com

FIBRE & NETWORK CONNECTIVITY



- Innovation
- Digital Engineering
- Research & Development
- Manufacturing Excellence
- In-Region Operations
- High Quality Solutions
- PartnerPRO Network
- System Warranty
- Confidence
- Agility
- Sustainability

At CommScope we push the boundaries of communications technology to create the world's most advanced networks. We design, manufacture, install and support the hardware infrastructure and software intelligence that enable our digital society to interact and thrive. With decades of connectivity experience and through our global manufacturing operations, including a Copper and Fibre Plant in Bray, Ireland, our solutions bring the innovation, quality and flexibility that advance broadband, enterprise and wireless networks to power progress and create lasting connections.

Across the globe, our people and solutions are redefining connectivity, solving today's challenges and driving the innovation that will meet the needs of what's next.

“ Convergent pride themselves on being their Customers Best Service Provider, by providing leading Security Technology solutions to our clients in all corners of the globe.”



convergent[®]

Adrian Hill

General Manager Ireland

 www.convergent.com

SECURITY SYSTEMS SECURITY & MONITORING



- Access Control
- Video Surveillance
- Perimeter Protection
- Identity and Asset Mangement
- Edge and Modular Solutions
- Environmental Monitoring

Convergent is a global systems integrator focused on delivering results for our customers through unparalleled service excellence. At Convergent, our top priority is service in every way — service to customers, colleagues, and community.

As an integrator, Convergent works alongside a global network of partners and manufacturers to design, install, and service security, fire alarm, life safety, audio-visual, and building automation solutions for enterprise customers.

Our unique and empowered culture, guided by our Values and Beliefs, helps us stay accountable to our mission, and our number one objective: to be our customers’ best service provider.

“ Our friendly team are market experts across the energy value chain and break down complex issues in an easy-to-understand way. ”



CORNWALL INSIGHT
CREATING CLARITY

Niall Durham

Senior Consultant

 www.cornwall-insight.ie

CONSULTANCY



- Corporate power purchase agreements
- Onsite generation, microgrid, renewables integration
- Asset investment market modelling and business case development
- Current and possible future market design
- Generation, retail and network company business models and market entry
- Trading, hedging and risk management
- Energy policy and regulatory framework
- Buy-side and sell-side investment due diligence on assets and businesses involved in the energy sector

Cornwall Insight is an energy market research and advisory company, offering services across the value chain. We provide you with latest insights and updates on the market, enabling you to make better decisions faster. Recognised as one of the top management consultancies in the energy, utilities and environmental sector by the Financial Times for three years in a row, Cornwall Insight is known for its independent expertise and is trusted by clients such as large energy end users, energy generation companies, renewables developers, retail energy providers, system operators and regulators.



“ With a track record of meeting and surpassing the aggressive speed-to-market demands of hyperscale cloud providers, as well as the expanding IT infrastructure requirements of the enterprise, CyrusOne provides the flexibility, reliability, security, and connectivity that foster business growth. ”



Mark Moloney

Director Interconnection
Solutions and
Sustainability

 www.cyrusone.com

DATA CENTRE OWNER & OPERATOR

CyrusOne (NASDAQ: CONE) is a high-growth real estate investment trust (REIT) specializing in highly reliable enterprise-class, carrier-neutral data center properties. The Company provides mission-critical data center facilities that protect and ensure the continued operation of IT infrastructure for approximately 1,000 customers, including more than 200 Fortune 1000 companies.

CyrusOne offers a tailored, customer service-focused platform and is committed to full transparency in communication, management, and service delivery throughout its more than 45 data centers worldwide.





POWER DISTRIBUTION, MANAGEMENT & METERING



- Power management solutions

Eaton is a power management company with 2018 sales of \$21.6 billion. We provide energy-efficient solutions that help our customers effectively manage electrical, hydraulic and mechanical power more efficiently, safely and sustainably.

Eaton is dedicated to improving the quality of life and the environment through the use of power management technologies and services. Eaton has approximately 99,000 employees and sells products to customers in more than 175 countries.



Powering Business Worldwide

Karen Gooch

MEA Marcomms
Manager - Data Centre &
Key Accounts

 www.eaton.com

“ Being at the forefront of the energy transition is a responsibility that unites everyone at Enel X. Together, we work to create a more sustainable future for us all.”



enel x

Tony Whittle

Managing Director UK & IE

 www.corporate.enelx.com

POWER DISTRIBUTION, MANAGEMENT & METERING UTILITIES



- Net-Zero advisory solutions
- Demand response and flexibility programmes
- Battery energy storage systems
- Renewable energy advisory and procurement
- Energy spend and emissions reporting

Enel X is Enel Group’s global business line dedicated to advancing the energy transition. We help commercial and industrial scale energy users to reduce carbon emissions, increase profitability, strengthen operational resilience and support a dynamic grid system by providing better ways to source, store, manage and consume energy. A leader in the advanced energy solutions sector, Enel X manages 7.7 GW of demand response capacity and 375 MW of storage capacity worldwide. The Enel Group is listed on all major sustainability indexes and is committed to achieving 100% carbon neutrality by 2040.

“ Business is technology. As the world’s digital infrastructure company, we are empowering Ireland’s enterprises to maximise their global potential.”



EQUINIX

Maurice Mortell

Managing Director,
Ireland and Sustainability
Lead EMEA

 www.equinix.ie

DATA CENTRE OWNER & OPERATOR

- Interconnection Services including Equinix Fabric, Equinix Connect and Equinix Fibre Connect
- Equinix Digital Services also include Network Edge and Equinix Metal
- Managed Services and our recently launched Equinix Precision Time, Time-as-a-Service
- Colocation across Dublin metro and Equinix’s global footprint

Equinix is the world’s digital infrastructure company. We interconnect industry-leading organisations in finance, manufacturing, mobility, transportation, government, healthcare and education across a cloud-first world.

Globally, Platform Equinix is comprised of 240 data centers across 66 metros and 27 countries on 6 continents, providing data centre and interconnection services to 10,000+ companies including more than 50% of Fortune 500 companies. This unrivalled reach enables our customers to connect to all of the right partners in all the right places. Find out more about our business and our unique culture at <https://www.equinix.ie/about>



“ With a global footprint of 45 data centres, Ethos are the experts when it comes to excellent data centre design.”



ETHOS
Engineering Wow

Greg Hayden

CEO

 www.ethoseng.ie

CONSULTANCY & PROJECT MANAGEMENT, ELECTRICAL & MECHANICAL INSTALLATION



- Mechanical Design Consultancy
- Electrical Design Consultancy
- Design Management
- Building Physics & Green Ratings
- Digital & Smart Buildings

Ethos is Ireland’s largest Mechanical & Electrical consultancy and one of Europe’s leading experts in Data Centre Design, Urbanism, Regional, Sustainability, Digital Services (Smart Buildings) and Global Tech within residential, commercial, micro-electronic, healthcare, hi-tech and pharma sectors.

The firm employs over 110 staff, with an HQ in Dublin, a Galway regional office and work sites throughout Ireland. Ethos design work is supported through membership in the First Q network of over 3,000 MEP engineers across EMEA.

Established in 2005 and awarded Engineering Firm of the Year, 2020, Ethos recently announced “Going for Growth,” its four-year global expansion plan.

“ We continue to focus on delivering the best possible bandwidth solutions for our customers and building networks that are critical to Europe’s future bandwidth needs.”



euNetworks

Hannah Britt

Senior Director of
Marketing and IR

 www.eunetworks.com



NETWORK CONNECTIVITY



- Dark Fibre
- Wavelengths
- Ethernet
- Internet
- Data Centre Connectivity
- Cloud Connectivity
- euTrade Ultra Low Latency services
- Private Connect
- OLS
- Multi Service Ports
- Metro Connectivity
- Long Haul Connectivity

euNetworks is a bandwidth infrastructure company, owning and operating 17 fibre based metropolitan networks connected with a high capacity intercity backbone covering 53 cities in 17 countries across Europe.

The company leads the market in data centre connectivity, directly connecting over 470 today. euNetworks is also a leading cloud connectivity provider and offers a targeted portfolio of metropolitan and long haul services including Dark Fibre, Wavelengths, and Ethernet.

Wholesale, finance, content, media, mobile, data centre and enterprise customers benefit from euNetworks’ unique inventory of fibre and duct based assets that are tailored to fulfil their high bandwidth needs. For further information visit eunetworks.com.

“ Our multi-disciplinary team at Eversheds Sutherland are fully immersed in the data centre sector, not only understanding the legal issues but also having a deep understanding of the market across multi-jurisdictions. ”



**EVERSHEDS
SUTHERLAND**

Marie McGinley

Head of Intellectual Property, Technology and Data Protection

 www.eversheds-sutherland.com

LEGAL SERVICES

- Site acquisition and development
- Partnering arrangements
- Leasing agreements, co-location leases and third party agreements
- Construction and infrastructure
- Tax and structuring
- Employment law
- Outsourcing and data hosting
- Advising on energy; connection and supply arrangements, renewables, improving green connections and planning for growth
- Regulatory and compliance issues, in a volatile sector, subject to rapid political changes in direction and strategy
- System security and risk management strategy

Eversheds Sutherland is a global top 10 law firm that provides multidisciplinary legal advice and solutions to a global client base. The firm has over 70 offices in over 30 jurisdictions worldwide. Its Irish offices (Dublin and Belfast) serve as an important European hub for the firm’s international client base and employ over 300 talented professionals. The firm provides a full range of legal services, including corporate and M&A, dispute resolution and litigation, energy and infrastructure, data protection, insurance and financial service, employment and pensions, intellectual property, real estate and construction, and tax.

Eversheds Sutherland holds the internationally recognised ISO 27001 certification for its exemplary data protection and information security in the Republic of Ireland and Northern Ireland for its Dublin and Belfast offices. This ensures the firm follows best practices in protecting its data, improving its cybersecurity posture and business efficiency, while also ensuring that it meets legal and regulatory data protection obligations.





Tom Griffin

Vice President of Data Centres

www.exyte.net

DESIGN & ENGINEERING COMMISSIONING



- Design, Engineering & Delivery of Facilities

Exyte is a global leader in design, engineering and delivery of facilities for high-tech industries.

Exyte has operated in Ireland and Northern Ireland since 2000, applying global expertise, technology and engineering excellence to deliver some of the area's most advanced manufacturing plants, life science and data centre projects.

“ Our word is our bond, we are always accessible and very easy to deal with. Fuartech prides itself on service, we are go getters, who get the job done.”



Gareth Higgins

Director

 www.fuartech.com



AIRFLOW DESIGN & SOLUTIONS

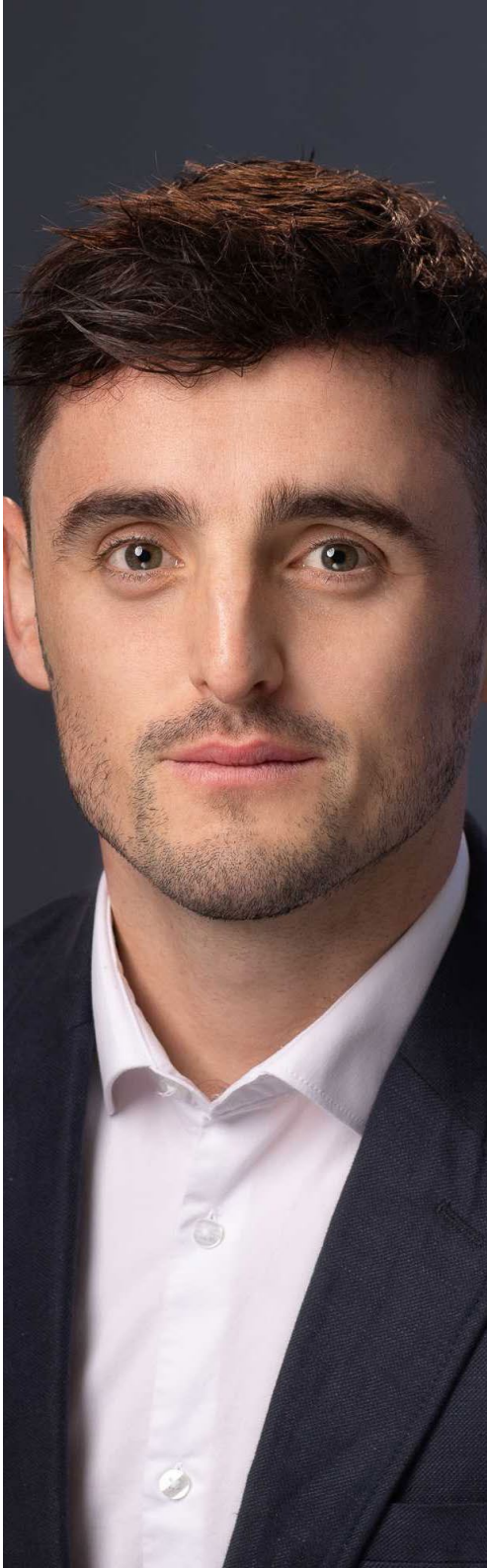


- Hot/Cold Aisle Containment Manufacturers
- Manufacturers of Security caging
- On time installation
- Project Management
- Servicing EMEA
- Site Survey
- 2D/3D CAD modelling
- Custom Fabrication
- 24 hour on site servicing for mission critical services

From early design, again all the way through to installation, and project sign off, our turnkey solutions offers you the comfort factor dealing with the experts in design and the people in the know how. We have our own in house installation teams, and installation arms all throughout EMEA to deliver your project to the highest standards.

Our product set is the slickest and the most streamline in the market, that meets your clients specification needs.

*“GagaMuller Group
Unlock the value in every
dimension of your projects
using deep insights &
analytics mixed with
global expertise, creating
strategies that drive
superior outcomes.”*



Paddy Ryan

CEO

 www.gagamuller.com

PROJECT MANAGEMENT & CONSULTANCY

- Digital Solutions & Systems Integration
- Project Monitoring & Risk Management
- Lifecycle Cost Analytics
- Design & BIM Management
- DFMA & Pre-con Management
- Logistic & Asset Management
- Schedule & Construction Management
- Change & Dispute Management
- Custom Software Development
- Laser Scanning & Drone Surveys

GagaMuller Group vision is to build an environment that shapes a better, more connected & sustainable future using autonomous & spatial data.

This is achieved by connecting decision makers to a dynamic network of information. Accurately delivering a fully transparent real time data driven project controls experience throughout your entire project lifecycle. Allowing our clients to Build with Data.



“ It’s an exciting time to be part of the Digital Realty family. It’s great to be supporting Ireland’s digital infrastructure and also allowing enterprises to realise their hybrid IT strategies.”



interxion[™]
A DIGITAL REALTY COMPANY

Niamh Dundon

Marketing Manager

www.interxion.com

DATA CENTRE OWNER & OPERATOR

- Colocation Services to support your hybrid IT Strategy
- The only colocation provider in Ireland with direct access to AWS Direct Connect and Azure ExpressRoute
- Cloud Connect – enables private connections to all public cloud providers
- Cross Connects – a range of connectivity options to minimize networking costs, significantly reduce latency and improve application performance

Interxion: A Digital Realty Company is a leading provider of carrier & cloud neutral data centre services across EMEA. As part of Digital Realty, customers have access to 49 metros across six continents. With 4 colocation facilities around Dublin, Interxion tailors’ solutions around customer’s specific requirements from an entire data hall, secure private cages or single cabinets. With access to over 45 network carriers, 3 local fibre routes, 7 subsea cable networks, and as the only colocation provider in Dublin with both AWS Direct Connect and Azure ExpressRoute locally deployed, Interxion is the ideal home for your IT infrastructure.



“ Jacobs is pushing the industry boundaries as a solution provider as well as an employer – focused on sustainability, innovation, and diversity across all areas of our business.”

Jacobs

Michael Donegan

Director of Business
Development – EMEA

 www.jacobs.com



DESIGN & ENGINEERING CONSTRUCTION

- End-to-end services including:
- Site Analysis and Due Diligence
- Master Planning
- Architecture
- Structural and Civil Engineering
- MEP/Fire/Life Safety Engineering
- Telecommunications and Security Design
- Water and Environmental Engineering
- Sustainability and Renewable Energy Services
- Project and Construction Management
- Commissioning

At Jacobs, we're challenging today to reinvent tomorrow by solving the world's most critical problems for thriving cities, resilient environments, mission-critical outcomes, operational advancement, scientific discovery and cutting-edge manufacturing, turning abstract ideas into realities that transform the world for good. With \$14 billion in revenue and a talent force of more than 55,000, Jacobs provides a full spectrum of professional services including consulting, technical, scientific and project delivery for the government and private sector.



“ In a world where connectivity is the difference between success and failure, we won't rest until you have the infrastructure you can completely rely on. ”



Matt Porter

Managing Director

 www.kedington.com

NETWORK CONNECTIVITY



- ICT network cabling infrastructure systems
- LAN, WAN, Wireless & network security solutions
- Smart Building systems integration (MSI)
- Integrated network component supplies

Kedington is the largest IT network infrastructure solutions company in Ireland, providing active and passive IT network solutions, structured cabling and data centre engineering services to organisations of all sizes in the public and private sector.

Kedington designs, supplies, installs and supports leading edge networking solutions, incorporating passive and active (Voice, LAN Switching) networking, wireless technology and intelligent building systems. Since being established in 1989, Kedington has installed in excess of four million data ports with over 250 million metres of UTP cabling and three million metres of fibre.

“ At Keppel we pride ourselves on being a trusted global company building a sustainable future. ”



Keppel Data Centres

Gary Watson

Country Manager

 www.keppeldatacentres.com

DATA CENTRE OWNER & OPERATOR

- Wholesale Colocation
- Build to Suit
- Connectivity
- Asset Management
- Renewable Energy

Keppel provide solutions for sustainable urbanisation, focusing on four key areas comprising energy & environment, urban development, connectivity, and asset management. With sustainability at the core of our strategy, we harness the strengths and expertise of our business units to develop, operate and maintain real assets, which provide diverse solutions that are good for the planet, for people and for the Company.



“ Kirby is a values driven business. Our five core values; people, safety, quality, delivery and value, are at the centre of everything that we do and form the basis of our culture.”



Aidan Kerins

Group Business
Development Director

 www.kirbygroup.com

CONSTRUCTION, ELECTRICAL & MECHANICAL INSTALLATION



- Electrical and Instrumentation Services
- Mechanical, Pipework and HVAC Services
- HV/ MV Services
- Off-Site Manufacturing

Founded in 1964, Kirby is a leading mechanical and electrical engineering contractor with operations in Ireland, the UK and Mainland Europe.

Kirby provides full mechanical and electrical engineering contracting services as well as specialist high voltage (HV) and medium voltage (MV) design and construction services to clients across a number of different sectors including Data Centres, Life Sciences, Industrial Manufacturing, Energy and Commercial.



KOHLER®

Pat Cregan

Director

 www.kohlerpower.com

POWER MANAGEMENT



- Power systems- from planning the design and choice of equipment to final testing and commissioning

Kohler Power is a global force in power solutions since 1920. Kohler is committed to reliable, intelligent products, advanced engineering, and responsive after-sale support. As the largest privately-owned manufacturer in the world, we have 100 years of experience in industrial power and benefit from global R&D, manufacturing, sales, and distribution integration. Inspired by our clients, we develop dedicated solutions for data centers worldwide.

From planning the design and choice of equipment to final testing and commissioning, Kohler offers reliable power systems, precisely designed to customer specifications, great flexibility in manufacturing, extreme rigor during testing, and meticulous precautions during commissioning.

“ LPI Group is renowned for providing ultra-high-performance lightning protection, earthing, and surge protection systems in a customer-centric, innovative, and strategic manner. ”



Lynn Lambe

Marketing Manager

 www.lpigroup.com

ROOFING AND LIGHTNING SOLUTIONS

- Design and Consultancy
- Construction Installation
- Off Site Construction
- Digital Construction / BIM
- Asset Management
- Maintenance
- Critical Electrical Appliances

In today's connected world, it's important now more than ever to protect critical information and data. When it comes to lightning protection for data centres, we ensure that key exposure areas to lightning strikes within these facilities, including power supply lines, the core data centre building and data processing and storage units, are protected against the detrimental damages of lightning strikes.

Established in 2011, LPI is one of Europe's leading professional contracting firms specialising in high-performance lightning protection systems, earthing systems and surge protection devices. Our team of experts deliver industry-leading services to data centres across Europe, including the consultancy, design, supply, installation, commissioning and maintenance of our systems.



“ We at MCA pride ourselves on our ability to innovate, adapt and evolve, in order to tackle the current and future challenges within society.”

MCA

ARCHITECTS

Neil McCormick

BS.Arch M.Arch MRIAI
ARB, Associate Architect

 www.mca.ie



ARCHITECTURE



- Architectural
- Interior design
- Project management
- Masterplanning

MCA Architects are based in Dublin and work nationally and internationally providing a comprehensive Architectural service in the realisation of building projects from inception to completion.

Services include architectural, interior design and project management. We have extensive experience of preparing masterplans involving residential housing and apartment developments, office, healthcare, industrial and leisure. We are a commercially aware practice committed to delivering outstanding design solutions that exceed our Clients' needs and expectations which provide significant added value, are socially and environmentally responsible.

We also have considerable experience of collaborating with leading international architectural firms on a number of projects.

“ At Mercury, we turn clients into partners and build relationships that thrive, allowing us to collaborate and deliver innovative solutions to complex engineering challenges.”



Stephen Byrne

Group Business
Development Manager

 www.mercuryeng.com



CONSTRUCTION, ELECTRICAL & MECHANICAL INSTALLATION



- Enterprise Data Centres
- Advanced Technology
- Life Sciences
- Hyperscale Data Centres
- Fire Protection
- Technical Support Services (TSS)

Mercury is a European contractor. We build and manage complex engineering projects that reimagine how people work and live in the built environment.

We believe that real innovation happens if you're willing to be brave. Our determination and sharp focus enable us to deliver leading edge construction solutions across a range of key sectors, taking our clients to new territories they never thought possible. Website www.mercuryeng.com Phone +353 1 216 3000

“ We leverage historical data and invest in industry-leading technology to help our clients build better, faster and smarter.”



Anthony Mc Dermott

Partner

 www.mitchellmcdermott.com

CONSULTANCY PROJECT MANAGEMENT



- Quantity Surveying
- Project Management
- Project Monitoring
- Funder Advisory Services
- Technical Due Diligence
- Employers Representative
- Market Intelligence

Mitchell McDermott is an independent, full-service and data-led construction consultancy that empowers ambitious companies to build better.

With a relentless focus on quality, efficiency and new ideas, we offer hands-on Quantity Surveying, Project Management, Funder Advisory and Specialist Services to help clients deliver ever more exciting, practical and sustainable spaces - efficiently and on deadline.

Founded in 2015 by Paul Mitchell and Anthony McDermott, MMCD has since grown to 60 team members, We recently won the 2021 and 2022 Project Management Firm of the Year award, as well as ranking 1st in Irelands Best Workplaces 2022 (Small firms).

“ Moy provide an energised and enthusiastic service to deliver a bespoke critical roof system uniquely tailored to your project requirements.”



Cathal Quinn

Group Commercial Director

 www.moymaterials.com

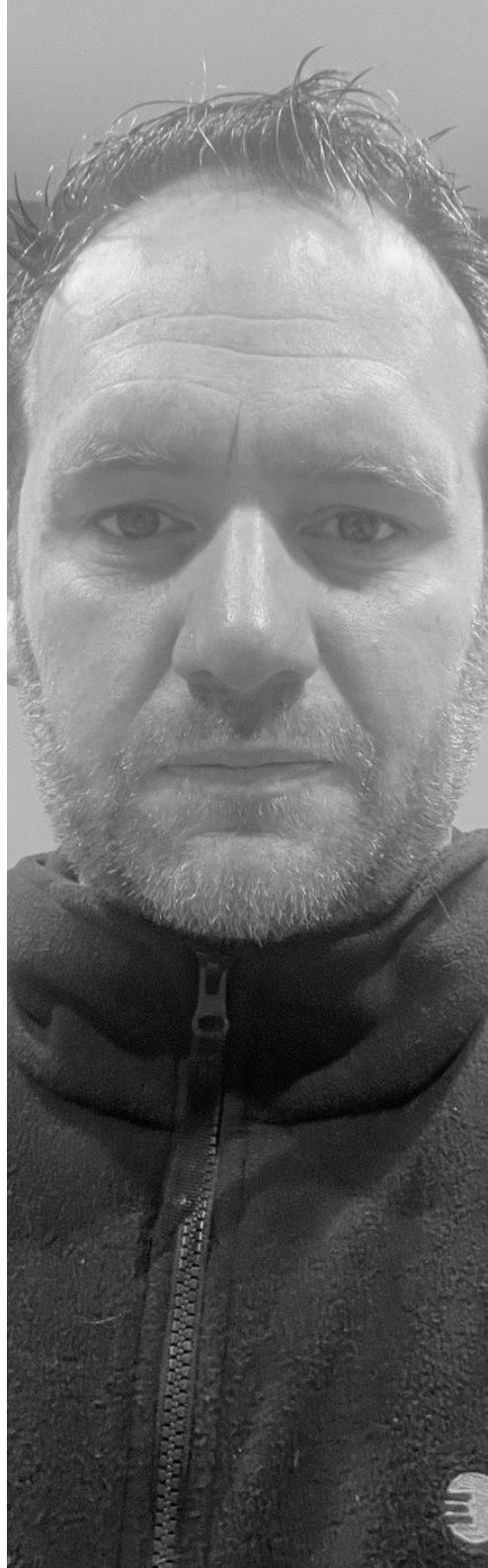
ROOFING

- Roof Systems Design
- Lost Habitat Replacement Through Living & Blue Roofs
- Drainage Analysis
- Intelligent Roofing Smart Monitoring Solutions

Building design is a collaborative process harnessing the creativity of solution driven professionals across a range of disciplines. To this process, Moy bring 4 decades of technological advancement with the highest standards in compliance, to deliver added value and Net Zero strategising to projects globally. Creating Roof Systems which advance your sustainability targets and delivering with exemplary customer service.



“ We are proud to be trendsetters in data centre cooling energy efficiency and bringing flexibility to meet our customers varied requirements.”



HVAC



- Low Energy Sustainable Systems
- Indirect And Direct Evaporative Cooling Units
- Precision Cooling Units
- Waterless Cooling Units
- Split System For Space Restricted Sites
- Make-Up Air And Humidity Control Systems
- Customised Solutions
- Full-Service Plans
- Turnkey Solutions

Munters is a global leader in energy-efficient and sustainable air treatment solutions. Using innovative technologies, Munters has been defining the future of air treatment since 1955. Munters currently cools over 1.8GW of rejected heat from data centres around the globe with a portfolio mix of both direct and indirect energy-efficient cooling solutions. Munters' advanced cooling systems provide data centres the desired cooling results using significantly less energy than standard air conditioning.



David Bourke

Commercial Director

 www.munters.com



| PURE DC |

Howard Pheby

Business Development
Director

 www.puredc.global

DATA CENTRE OWNER & OPERATOR

- Design, Build, Operation of Hyperscale DCs

Pure specialises in designing, building and operating hyperscale data centres, anywhere in the world, to the highest industry standards.

Our goal is to be an adjunct to our customer's internal teams, working with them to seamlessly integrate with their internal operations. In achieving our objectives we are driven by our core values of availability, service and integrity.

Pure is backed by world-class financial institutions and managed by leaders each with decades of specialist industry experience, focussed on delivering 100% availability, wherever we operate, every day, throughout the life of your contract.



“ Rebelleon are proud to drive climate action, while empowering and improving local communities. We do things differently and pride ourselves on our novel approach to complex challenges.”

REBELLEON

Alma Sottile

Sustainability Consultant

 www.rebelleon.co.uk



CONSULTANCY PROJECT MANAGEMENT

- Life Cycle Assessment (LCA)
- Net Zero Roadmapping
- ESG Frameworks
- Carbon Accounting
- Social Value Frameworks
- Creative Community Impact Projects
- Occupational Health and Safety
- Urban Design for Communities

Rebelleon is a sustainability consultancy on a mission to change the world. Founded in 2020, the company strives to challenge traditional ways of working and bring sustainability to the forefront of decision making within the construction and high-tech industries. Through this, Rebelleon aim to radically impact climate action and improve local communities.

We move our clients towards carbon net-zero with real-world solutions, getting to grips with their business to design the tools they need for genuine and long-lasting change. We guide our clients through solutions that we build, helping them to build a sustainable legacy.



“ Rittal prides itself on being the best provider of industrial enclosure systems including power distribution and climate control as well IT infrastructure and software for the Data Centre market.”



Wayne Moody

Sales Director

 www.rittal.com

POWER DISTRIBUTION HVAC



- Enclosures
- Power distribution
- Climate
- IT infrastructure and software & services

Rittal. Power and Vision!

Since its foundation in 1961, Rittal has continuously evolved into the world’s leading systems provider for enclosures, power distribution, climate control, IT infrastructure and software & services.

Today, “Rittal – The System.” offers you a perfectly coordinated system platform. It unites innovative productions, pioneering engineering solutions and global service to accommodate the most diverse requirements.

All from a single source, all in top quality.

“ In RKD, ‘design thinking’ goes much deeper than the visual appearance. That’s why we deliver Design that Works! ”



RKD

Ronan Smith

Director

 www.rkd.ie

ARCHITECTURE (HIGH TECH DESIGN CONSULTANCY) + DESIGN & ENGINEERING + CONSULTANCY



- Mission Critical Design / Integrated Architectural and Engineering (A/E) Design / Brief Development / Masterplanning / Regulatory Compliance / Site Selection & Due Diligence / Sustainability Accreditation / Certified BIM Leadership / Prototype Design Localisation / Permitting / On-Site Construction Support

RKD is an international design consultant for high-tech projects. Our award-winning team comprises architectural and engineering professionals with offices in Ireland, Belgium, Italy, Sweden, Spain and Poland.

We have a staff resource of 170+ people and the proven ability to deliver large value projects. Leveraging expert multidisciplinary experience we provide end-to-end project solutions for high tech, mission critical, pharma, and food & beverage clients across the EMEA region.

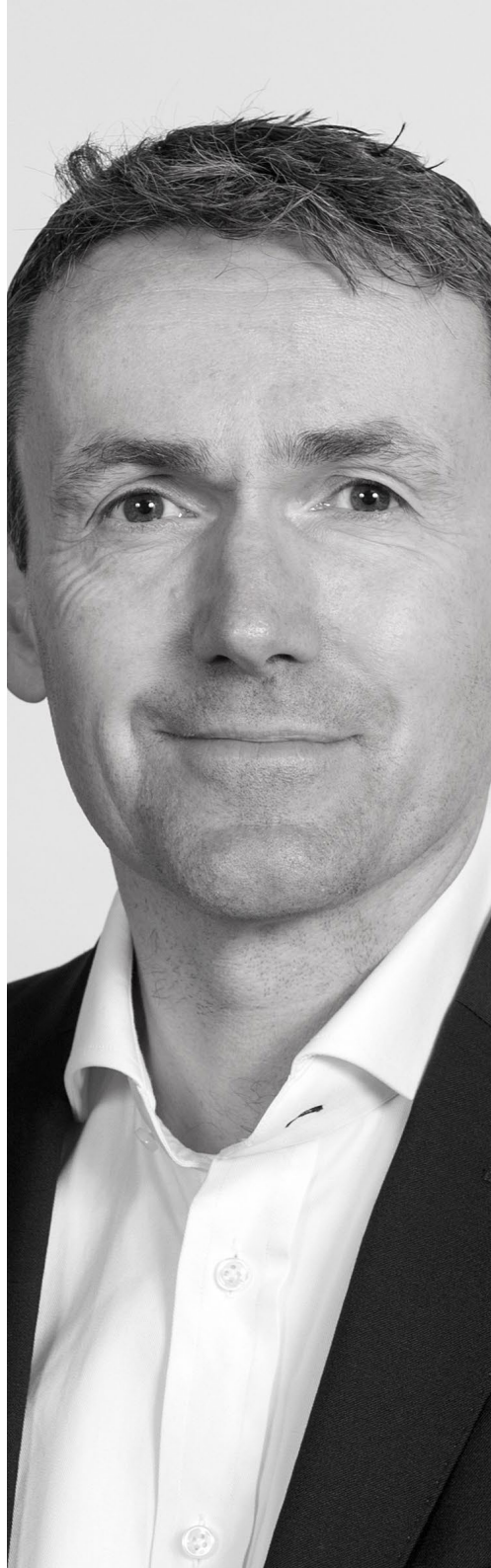
“ RWL are delighted to be part of the Host in Ireland community in 2022. We recognise the value of partnership with collaboration and HII provides the perfect platform to utilise this as we continue to evolve with the DC industry.”



Robert Walsh

Managing Director

 www.rwlas.com



CABLING & NETWORK PRODUCTS



- Structured Cabling
- Cable Containment
- Testing & Certification
- Training
- Copper & Fibre Data Centre Solutions

Our mission is to be your digital partner for Sustainability and Efficiency. We drive digital transformation by integrating world-leading process and energy technologies to realise the full efficiency and sustainability opportunities for your business.

We provide end-point to cloud integration connecting products, controls, software and services. We enable lifecycle solutions from design and build to operate and maintain phases through a digital twin. We deliver capabilities to transform from site-to-site to an integrated company management. Our integrated solutions are built with safety, reliability and cybersecurity for your homes, buildings, data centres, infrastructure and industries.

“ As an impact company, our mission is to decarbonise the digital infrastructure sector, and build sustainable data centres of the future.”



Marc Garner

VP, Secure Power
Division UK & Ireland

 www.se.com

DESIGN & ENGINEERING | HVAC | RACK SYSTEMS | UPS SYSTEMS & BATTERIES | POWER DISTRIBUTION, MANAGEMENT & METERING | ASSET MANAGEMENT & MONITORING

- Plan & Design, Build: Modular Data Centres
- Equip: Micro Data Centres, Row Data Centres, Modular Data centres, Pod Data centres, UPS, Racks and Accessories, Power Distribution – Rack Power Distribution and Row 3 Phase Power Distribution, Data Centre Management Software and services, Security and Environmental Monitoring, Cooling solutions, MV, LV
- Operate: Managing and Monitoring the customer’s colocation, data centre, and Distributed IT sites in the cloud or on-premises through our software and services

Our mission is to be your digital partner for Sustainability and Efficiency. We drive digital transformation by integrating world-leading process and energy technologies to realise the full efficiency and sustainability opportunities for your business. We provide end-point to cloud integration connecting products, controls, software and services. We enable lifecycle solutions from design and build to operate and maintain phases through a digital twin. We deliver capabilities to transform from site-to-site to an integrated company management. Our integrated solutions are built with safety, reliability and cybersecurity for your homes, buildings, data centres, infrastructure and industries.



“ We are the only wholly Irish owned independent fire and security business working in the data centre sector and the first to be certified to ISO27001.”



SHARPGROUP 

Ivan Nolan

Managing Director

 www.sharpgroup.ie

DESIGN & ENGINEERING CONSULTANCY SECURITY SYSTEMS FACILITY SERVICES

- Fire prevention and protection services
- Security products and services
- Concept design
- Installation and commissioning
- Manned security services
- Mobile guarding
- Proactive monitoring
- Maintenance and services

Founded in 1999, Sharp Group Fire & Security Services is the leading supplier and installer of electronic security and fire systems in Ireland. Since the company's inception it has carried out major projects for many leading organisations across corporate, commercial and public sectors, and blue-chip companies. Sharp Group is independently audited to the highest international standards and is the first Irish-owned fire and security company to obtain ISO27001 and ISO37001 certification. Sharp Group have become synonymous with high-end managed services from concept design, installation and commissioning, through to maintenance, manned staff, mobile guarding and proactive monitoring.



“ Electrical engineering from Siemens enables effective power distribution planning and optimization of energy consumption to enhance data centre performance.”



SIEMENS

Ingenuity for life

Derek Kelly

Regional Account
Manager

 www.siemens.com

POWER MANAGEMENT, POWER DISTRIBUTION



- Medium Voltage Switchgear
- Distribution Boards RPP PDU
- Service, Commissioning, Support
- E HOUSE Kiosks, Skids, RMU
- Low Voltage Switchgear & Solutions
- Busbar Trunking Systems & Solutions
- Circuit Breakers: ACB/MCCB/MCB
- Transformers
- Protection and Control products and solutions
- 61850 design and configuration, full power system digitalisation

Siemens is a global technology powerhouse that has stood for engineering excellence, innovation, quality, reliability and internationality for more than 170 years. Active around the world, the company focuses on intelligent infrastructure for buildings and distributed energy systems and on automation and digitalization in the process and manufacturing industries. Siemens brings together the digital and physical worlds to benefit customers and society.

Siemens is shaping the market for intelligent, adaptive infrastructure, supplying technologies for more resource-efficient factories, resilient supply chains, smarter buildings and energy grids.

Siemens employs more than 600 people in Ireland and has facilities in Glasnevin, Shannon, Swords and Letterkenny.



Eanna O'Conbui

Director of Accounts



www.Silent-Aire.com

HVAC

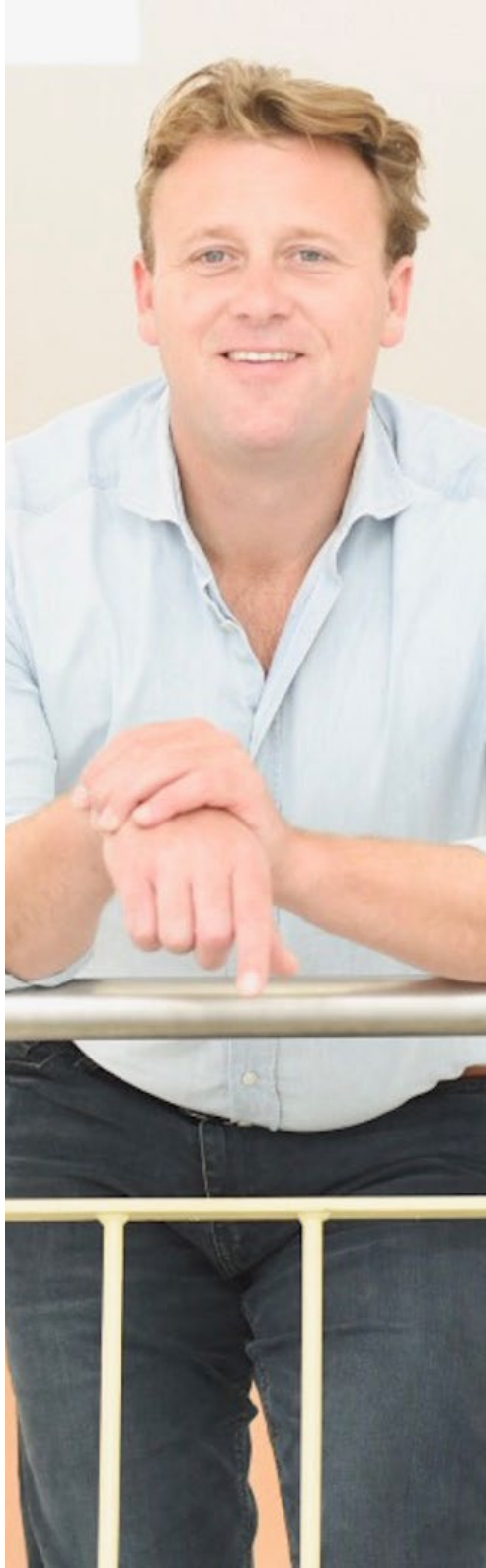


- Modular data centers
- Power room modules
- Turnkey modular deployments
- Custom HVAC (CRACs, CRAHUs, AHUs)
- Mission critical services

Our portfolio of solutions includes modular data centers; power room modules, turnkey modular deployments, custom HVAC (CRACs, CRAHUs, AHUs) and mission critical services.

Silent-Aire employs over 3000 people, with a total of 13 manufacturing facilities and over 1 Million sq/ft of capacity in Edmonton, Alberta, Gilbert, Arizona, and Dublin, Ireland. There are sales/service centers in Seattle, Washington, Boardman, Oregon, Ashburn, Virginia and Dublin.

“ At SLS we are proud to deliver data services sustainably, in alignment with our purpose: create a world without waste to preserve our planet. ”



Jelle Slenters

EMEA Head of Sales

 www.simslifecycle.com

RECYCLING & DESMANTLING



- Decommissioning
- Data destruction
- Resale
- Redeployment
- Recycling
- On-site technical services

Sims Lifecycle Services (SLS) provides solutions to extend the life of data center and IT equipment, realizing the value in end-of-life data center assets, components and materials. SLS works with enterprises and major cloud providers to deliver decommissioning of corporate IT assets and data center equipment. IT asset disposition (ITAD) and electronics recycling services offered at SLS support the evolution of the cloud and electronics industry towards circularity.

SLS clients benefit from data security, maximum IT value recovery, global compliance and sustainable IT use. As a responsible corporate citizen, and in alignment with the United Nations Sustainable Development Goals, we continuously seek new ways to contribute to the circular economy.

“ I am proud to be part of the incredible Sisk team. Our USP is our people, our dedicated team of experts work seamlessly together to deliver exceptional projects. The Sisk name is synonymous with quality, we want to be known for continuing to provide excellence.”



Philip Cruise

Pre-Construction Lead

 www.johnsiskandson.com

CONSTRUCTION



- General Contractor
- Programme & Construction Management
- Commissioning & Qualification
- Off-Site Manufacturing
- Design Services
- EPCMV (Engineering, Procurement, Construction Management, & Validation)
- Infrastructure & Facilities Management
- PPP/PFI

John Sisk & Son is an innovative, international, construction and engineering business with long term vision and over 160 years in operation. Early engagement with us on large scale projects is a key element for success.

Since our first forays into the Data Centre/ICT sector in the early 1980s, John Sisk & Son has had a continued, proven track record in delivering high-end, mission critical projects for domestic and multinational micro-electronics, data and ICT clients across Ireland and the UK.



Starline®

A brand of  **legrand**

Matthew George

Vice President Critical
Power

 www.starlinepower.com

POWER DISTRIBUTION



- Power distribution equipment
- Metering

Starline, a brand of Legrand, is a global leader in power distribution equipment. For 30 years, Starline products have provided data centres with the most flexible, reliable and customisable power distribution systems on the market.

These benefits, combined with a smart yet simple design strategy, have catapulted the Starline brand to becoming the premier distribution solution for mission-critical applications.

“ At STO Mission Critical we deliver on our customers’ requirements, through partnership, engagement, trust and ability. As our customers require redundancy and reliance 24/7 in their business we operate in a similar mindset to ensure a best in class service is delivered and executed.”



Richard Hemming

Pre-Construction Director

 www.structuretone.com

CONSTRUCTION



- Integrated project delivery
- D&B, CM/MC whole project delivery
- Strategic development planning and integration
- New build Green/Brown Field
- Critical upgrades and technical fit-outs
- Dedicated commissioning staff
- Construction services provided by dedicated in-house staff
- IST management and delivery
- Managed Design and delivery Services Inc BIM

Structure Tone Company was formed in 1971 with the Dublin office being established in 2000.

Since then, Structure Tone Dublin has become one of the industry leaders in the Irish market specialising in mission critical and data centres, building refurbishment and infrastructure upgrades and sustainability and healthcare projects.

*“ Succeed By Delivering A Better Experience.”
Every day we do our best to give our customers and employees the best possible experience.”*



David Phelan

Business Development
Director

 www.suireng.ie

ELECTRICAL & MECHANICAL INSTALLATION SERVICES CONSTRUCTION



- Design, build & Commissioning LV, MV & HV Data Centre Mission Critical M&E Plant & Equipment
- Replacement of legacy and inefficient M&E systems
- Contract Solutions: Traditional M&E Contracting, Design & Build, EPC and Operate
- Project Management
- Pre-Commission and Commissioning Management
- High Voltage Substation expertise

Suir Engineering has over 38 years of mechanical, electrical and instrumentation (M,E&I) expertise, with offices in Waterford, Dublin, Sweden, Denmark and Germany and a direct workforce of more than 1,300 people. The business carries out in the region of €240m in project work annually.

Suir Engineering is a market leader in the provision of electrical & mechanical contracting services to the Data Centre sector across Europe. Suir Engineering's experienced and internationally mobile 450 strong Data Centre team have been responsible for the construction of both hyperscale and colocation data centres throughout the continent over the past 20 years. Suir Engineering offer Traditional M&E contracting, Design & Build and Turnkey, EPC contract solutions to its Data Centre clients – continuous services and upgrade works are also part of the scope offering.

“ With our focus on assets and services, T5 is a full lifecycle partner for the most discerning data centre occupier. We help keep our customers “forever on!” ”



T5DataCenters™

Aaron Wangenheim

COO



www.t5datacenters.com

DATA CENTRE OWNER & OPERATOR

- Leasing and Development: Ready-Now Turnkey, Purpose-Built Powered Shells, Custom Build-to-Suit
- Facility Management: Turnkey Facility Management & Operations, Award-Winning Enterprise and Hyperscale FM&O Services, Complete Remote Hands & Data Hall Support, Staff Augmentation, Training, and Procedures
- Construction Services: Sustainable Design & Construction Practices, Mission Critical Facility Upgrades & Expansions, Turnkey Design, Commission & Construction, Equipment & Asset Procurement, Renewable Energy & Solar Array Installations

T5 Data Centers (T5) is a leading data center owner and operator, committed to delivering scalable mission-critical facilities, facility management and construction services that provide a “Forever On” environment. T5 Data Centers provides life-cycle data center services and purpose-built data center facilities to organizations across North America and Europe featuring robust design, redundant and reliable power and telecommunications, and 24-hour staff to support mission-critical computing applications. Visit t5datacenters.com or call (888) 239-7133 to learn more.



“ We are committed to manufacturing and delivering exceptional products and services that aim to improve the sustainability and performance operations of Data Centres.”

Tate[®]

Shane McMahon

General Manager Tate
Europe

 www.kingspan.com



AIRFLOW DESIGN & SOLUTIONS



- Manufacturers of optimum airflow solutions
- Engineering & design experts
- Offering BIM Detailing
- Agile project execution
- Ensuring on schedule project delivery
- Intuitive products for speedy installation
- Quality focused
- We are Planet Passionate

For over 55 years, Tate has been an industry leading global manufacturing provider of data centre solutions. We work collaboratively with our data centre clients providing structural ceilings and containment systems that are reliable and high performing. Our team of highly qualified and professional technical engineers are on hand to support our clients in their specific build requirements.

We have a long-term commitment to delivering a sustainable agenda as part of Kingspan Group's 10 year Planet Passionate programme, that addresses climate change, circularity and protection of our natural world. We believe these can only be met through true collaboration and partnership and are delighted that together our initiatives have been recognised by global environmental impact non-profit CDP since 2016, for driving climate change. As a member of RE100, together with Kingspan Group, we are actively committed to 100% renewable electricity and have joined as a key global partner with the World's GBC's Advancing Net Zero Project.

“ As the trend continues for data centres to use renewable power, we are here as a trusted partner advising customers on grid support and energy efficiency strategies. We work very closely with our clients throughout their lifecycles and geographies. ”



Alex Brew

Sales Director for UK & Ireland

 www.vertiv.com



CONSTRUCTION | LIGHTING SOLUTIONS | POWER SYSTEMS, DISTRIBUTION, MANAGEMENT & METERING | HVAC | RACKS SYSTEMS | UPS SYSTEMS & BATTERIES



- Electrical Switchgear
- DC Power Systems
- Power Distribution Systems
- Prefabricated Modular Data Centres
- Racks and Integrated Solutions
- Commissioning, Service, Maintenance and Remote Monitoring
- Thermal Management / Critical Cooling
- Uninterruptible Power Supply

As Architects of Continuity, we collaborate with our global customers to envision and build future-ready infrastructures. With decades of history operating in Ireland as a long-standing, valued partner to the major technology giants based there, we bring together a broad offering of power, cooling, IT and edge infrastructure and service solutions. Locally, we have over 400 MW of UPS and over 50 MW of cooling installed, and more than 50 engineers ready to support customers. Now strengthened with an enhanced power portfolio integrating E+I Engineering, a leading provider of electrical switchgear, modular power solutions and power distribution systems.

“ Deploying capital on a global stage, we have multiple developments under full control, offering clients maximum portfolio optionality and speed to market.”



Pete Jones

Chief Development Officer

 www.yondrgroup.com

DATA CENTRE OWNER & OPERATOR

- Regional strategy
- Land acquisition
- Secure power, planning and permitting
- Sustainability planning and solutions
- Design
- Construction
- Operations

Yondr is a global developer, owner operator and service provider of data centers. We deliver complex data center capacity needs for the world's largest tech companies. A supply-led business, we deploy capital on a global stage to provide clients maximum portfolio optionality. We de-risk and enable clients access to thousands of high quality megawatts, with scalable supply in multiple markets, simultaneously.





Host In Ireland

ABOUT HOST IN IRELAND

Host In Ireland is a global initiative to increase awareness of how and why digital infrastructure coming from Ireland plays a unique role around the world. With more than 50 global and Irish partner companies across the digital infrastructure ecosystem, Host In Ireland operates under a spirit of “co-opetition”. Market competitors come together in trust to support actions promoting the capabilities of Ireland as a centre of data excellence.

For more information about Host in Ireland, visit www.hostinireland.com.

 www.linkedin.com/company/hostinireland

 www.twitter.com/hostinireland

 www.facebook.com/HostInIreland/

